



GROWTH PARADOX

REIMAGINING LANDSCAPES

IFLA-APR
REGIONAL
CONGRESS
2025

NOVEMBER
14TH-15TH

JIO CONVENTION CENTRE

MUMBAI
INDIA



IFLA ASIA-PACIFIC
INTERNATIONAL FEDERATION
OF LANDSCAPE ARCHITECTS



INDIAN SOCIETY
OF LANDSCAPE ARCHITECTS
I S O L A

Who We Are



I S O L A

® The **Indian Society of Landscape Architects (ISOLA)**, founded in May 2003, is a **professional organization dedicated to representing landscape architects in India**. With a membership that spans across various states and extends internationally, ISOLA is a key advocate for the rapidly expanding field of landscape architecture.

ISOLA is committed to promoting professional excellence and raising global awareness about the discipline in India. As a **member of the International Federation of Landscape Architects (IFLA)**, a global non-governmental organization representing landscape architects worldwide, ISOLA contributes to the advancement of the profession. Within IFLA, the Asia-Pacific Region (IFLA-APR) comprises 14 countries, including India, Australia, China, Malaysia, Indonesia, Korea, Singapore, and Taiwan.

The Indian Society of Landscape Architects is scheduled to host the Annual IFLA-APR (International Federation of Landscape Architects-Asia Pacific Region) Regional Congress in **Mumbai in November 2025**.



Why India? Emergent India, Global Bharat

India is at a transformative juncture, navigating rapid development while prioritizing sustainability. As one of the world's fastest-growing economies, the nation is embracing innovation and environmental responsibility, leading efforts in renewable energy, urban greening, and smart city initiatives.

As a global leader, India's diverse, resilient, and forward-thinking approach aligns seamlessly with worldwide priorities of inclusivity and environmental stewardship. **Mumbai, the financial capital and a vibrant hub of culture and urban transformation with its strategic location, rich heritage, and dynamic urban renewal efforts serves as an ideal host city for the International Conference of Landscape Architects.** The city embodies the challenges and opportunities of urbanization, making it the perfect setting to explore innovative solutions.



The Theme **Growth Paradox** Reimagining Landscapes

The Asia-Pacific Region, home to over half of the world's population, is characterized by a remarkable diversity of landscapes, climates, cultures, and traditions. However, this region's rapid economic growth over the past few decades has brought challenges such as climate change, biodiversity loss, dilution of traditional knowledge systems, and widening socio-economic disparities.

Amid these pressing issues, **the time has come for landscape architects to ask critical questions: What kind of growth are we pursuing, and who benefits from it?**

This conference aims to examine the “Growth Paradox” through ecological, sociocultural, economic, and philosophical lenses. The focus will be on reimagining growth in ways that enhance human well-being while ensuring the continued flourishing of both human and non-human species.

Positioned at the intersection of urban development, environmental stewardship, and community design, landscape architects are uniquely equipped to lead this vital conversation.



The congress structure **Inclusivity, diversity and interactions**

The IFLA APR Congress is a meticulously designed, content-rich event that adheres to international standards. It **fosters inclusivity, adaptability, and depth, providing a dynamic platform for diverse stakeholders to engage meaningfully.**

The congress features **multiple concurrent sessions**, allowing participants to tailor their experience to their professional goals, personal interests, and availability. It welcomes a wide spectrum of attendees, including architecture students, emerging and experienced landscape architects, allied professionals, policymakers, and even the general public.

The thoughtfully curated program includes **expert lectures, panel discussions, academic research presentations, poster exhibitions, book readings, workshops, and policy dialogues.** These varied formats aim to spark innovative ideas, develop practical strategies, and challenge participants to rethink the role of landscape architecture in shaping a sustainable future.

By adopting an inclusive and dynamic approach, the congress encourages **cross-disciplinary collaboration, fosters meaningful interactions, and strengthens the shared vision of advancing the profession.** It ensures that all participants, regardless of their expertise, have opportunities to learn, connect, and contribute.





Diverse participation **Professionals, academics, industry & more**

With its theme, structure, and scale, the Congress will draw professionals and enthusiasts from diverse fields, fostering interdisciplinary dialogue and engagement across a broad spectrum of interests.

The participants would include:

Landscape Architects

Urban Planners & Designers

Architects

Environmental Planners

Ecologists & Environmental Scientists

Academics & Researchers

Academic Institutions

Professional Bodies

Landscape & Architecture Industry

Government Officials & Policy Makers

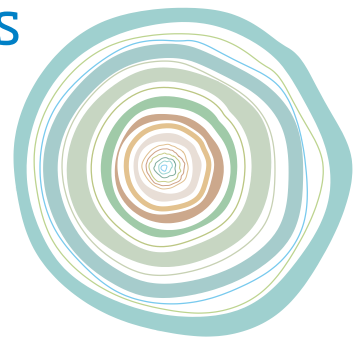
Infrastructure Experts

Artists & Cultural Historians

NGOs & Environmental Activists

Media & Publishers

General Public & Students



Congress+Expo Structure

November
14th-15th | 2025
Jio Convention Centre
Mumbai, India

Inclusivity
Diversity
Interactions

Day-1

Growth Paradox: Reimagining Landscapes

NEEV

INAUGURATION AND PLENARY SESSION

KEY NOTE

**Growth Paradox:
Dilemma and Critical Thinking**

SUB THEME 01

Need for Relooking at the Development Paradigm

CHARCHA SATRA

SPEAKER SESSION

CONCURRENT SESSIONS

DASTAVEJ

SUB THEME 01 | PAPER PRESENTATION

SAFARNAMA

PRESENTATION OF THE LANDSCAPE STUDIO
WORKS ACROSS INSTITUTES

SAWAL JAWAB

QUIZ COMPETITION

SUB THEME 02

Cultural and Regional Contextuality

CHARCHA SATRA

SPEAKER SESSION

CONCURRENT SESSIONS

DASTAVEJ

SUB THEME 02 | PAPER PRESENTATION

BHARAT KI VIVDHATA

PROJECT PRESENTATION

KARYASHALA

WORKSHOP

EXPO THROUGH THE DAY

Nukkad

KAHANIYA

PUPPET SHOW

NATAK COMPANY

STREET PLAY

IFLA AWARDS GALA NITE

CITY WALKS*

DAY 01 EVENING & DAY 02 MORNING

CURATED POST-CONGRESS TOURS*

Day-2

SUB THEME 03

Ecological and Social Ethics

CHARCHA SATRA

SPEAKER SESSION

CONCURRENT SESSIONS

DASTAVEJ

SUB THEME 03 | PAPER PRESENTATION

WORLD CAFE

CHALA CHITRA

DOCUMENTARY SCREENING

SUB THEME 04

Questioning the Status Quo

CHARCHA SATRA

SPEAKER SESSION

CONCURRENT SESSIONS

DASTAVEJ

SUB THEME 04 | PAPER PRESENTATION

TECHNICAL PRESENTATIONS

KARYASHALA

WORKSHOP

SESSION 05

CONCURRENT SESSIONS

VAD SAMVAD

DEBATE SESSION

EMERGENT INDIA

TALK BY ENTREPRENEURS

BHARAT KI VIVDHATA

PROJECT PRESENTATION

KARYASHALA

WORKSHOP

VYAKHYAN

PUBLIC SPEAKER

Resilience and Adaptation

RELEASE OF MANIFESTO

UTSAV

CELEBRATING THE INDIAN LANDSCAPE FRATERNITY

EXPO THROUGH THE DAY

Nukkad

BEEJ

SEED BANK STORIES

BHARAT KE SUR

FOLKLORE



NOTE | SESSIONS ARE SUBJECT TO CHANGE

*DETAILS TO FOLLOW



How Can You Participate?

The IFLA Asia-Pacific Regional (APR) Conference 2025 is a prestigious gathering of landscape architects, urban planners, environmental designers, and industry leaders from across the region. There are multiple ways to be a part of this transformative event, depending on your interests and level of engagement.

As a Delegate

JOIN a dynamic community of professionals, researchers, and students shaping the future of landscape architecture. As a delegate, you will:

- **Gain** exclusive access to keynote sessions by internationally renowned experts.
- **Participate** in interactive workshops, panel discussions, and knowledge-sharing forums.
- **Engage** with innovative ideas, trends, and strategies that drive sustainable design and resilient landscapes.
- **Expand** your professional network through structured networking events and informal meet-ups with peers and industry leaders.

As a Donor/Sponsor

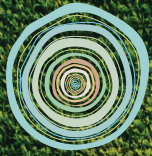
SUPPORT the advancement of landscape architecture and sustainability by becoming a valued sponsor or donor. By contributing, you will:

- **Choose** from flexible sponsorship tiers tailored to maximize your brand's visibility and engagement.
- **Gain** premium branding opportunities across event platforms, marketing materials, and venue spaces.
- **Secure** speaking engagements or panel participation to position your organization as a thought leader.
- **Showcase** your expertise and innovations through exhibition booths, digital showcases, or customized sponsor activations.

As an Exhibitor

SHOWCASE your latest technologies, solutions, and services in landscape architecture, urban planning, and sustainability in our exclusive exhibition space. As an exhibitor, you will:

- **Connect** directly with decision-makers, industry professionals, and potential clients.
- **Demonstrate** your innovations through live presentations, product launches, or interactive displays.
- **Benefit** from high visitor engagement with a strategically designed exhibition layout ensuring visibility and impact.
- **Build** long-term relationships with professionals seeking cutting-edge solutions for landscape and urban development.



This is your chance to be part of a landmark event shaping the future of landscape architecture in the Asia-Pacific region. Choose the level of engagement that suits you best and make a lasting impact!

IFLA-APR
REGIONAL
CONGRESS
2025

NOVEMBER
14TH-15TH
JIO CONVENTION CENTRE
MUMBAI
INDIA



CONTACT | iflaaprindia2025@gmail.com

PHOTO CREDITS |
UNSP/ASHI Haruhiko Iishi / Hila / Ricardo Gomez / Miha Rekar
ISOLA BANGALORE CHAPTER